

A Study Concerning the Importance of Game and Fish Species from Arad County

Ciontu C. I.^{1*}, Dincă Maria²

¹“Marin Drăcea” National Institute for Research and Development in Forestry, Timișoara, Romania

²“Marin Drăcea” National Institute for Research and Development in Forestry, Brașov, Romania

*Corresponding author. Email: ciontu_catalin@yahoo.com

Abstract The forest fund surface of Arad County amounts to 101.672 ha, being characterised by a continental temperate climate with very hot summers and very cold winters, but with a homogenous regime caused by the plain relief's uniformity. The County contains 74 game funds with a total surface of 743.114 ha. Eight species (fallow deer, mouflon, big duck, quail, snow bird, jay, chub and tench) were selected from the county's main game species and ordered based on 19 criteria (harvesting period, quantity harvested by a worker in 8 hours, harvesting cost, harvesting knowledge, harvesting instruments, the complexity of the harvesting process, the development of the harvesting process, knowledge for recognizing the species, distribution domain, biotic threats, abiotic threats, perishability, market potential, market request, “popularity” on the market, price of the raw product, derived product, the portfolio of derived products, transport from the harvesting place to the storage location). Grades from 1 to 8 were given for each studied species by using an analytical hierarchy process (AHP) and the Expert Choice Desktop software. The species with an important game interest are fallow deer and quail, while the least important ones are tench and jay.

Key words

game funds, Arad, fallow deer, quail, jay

The main purpose of game management is to allow the achievement of a maximum of favourable effects for society by valuing populations of wild animals that are the subject of the game activity, by respecting current specific laws.

The objective situation resulted from the current development of the human society requires to obtain these effects in special conditions. These are determined by an accentuated growth of negative anthropic influences on the environment, by the intensity of vegetal and animal agricultural production methods as well as by the necessity to produce higher quantities of wood material by practicing an intensive forestry.

This reality involves the necessity of substantiating the management of game interest species on well-determined and inclusive bio-ecologic and economic knowledge. This request requires that specialists involved in the management of wild species have an advanced knowledge of the species' life situations and of the relations that they establish with other species and with the other elements from the ecosystem to which they belong [6].

At the present, the game concept includes besides the actual game activities, a large array of actions for conserving biodiversity and for managing wild fauna of game interest. This is completed by training specialists, research and scientific foundation studies, awareness

actions that promote the role of wild fauna, sociologic studies etc.

The management of game funds limits the number of hunted species and intends to maintain habitats and biodiversity [12, 13].

The concern for protecting game was steadily joined by measures regarding the conservation and improvement of its natural life conditions (namely of the habitat) [7]. As such, the present concept was obtained, according to which “the game interest fauna is a natural renewable resource, a national and international public asset” while “hunting is realized today for ensuring an ecologic equilibrium, for improving the quality of fauna populations, for scientific investigations as well as for teaching or for recreation-sports purposes” (art. 2 and 3 from Law number 407/ 2006, with additional changes and addendums).

The present study intends to emphasize the most important game and fish species from Arad County and to evaluate them based on an analytic hierarchy process (AHP). The Expert Choice Desktop software was used for the analyses [3, 4, 8].

The concept of non-wood forest products (NWFPs) was introduced four decades ago in the tropical silviculture in order to take into account the production generated by the forest sector [4, 10, 16]. In Romania, non-wood products are mainly represented by forest fruits, mushrooms, medicinal plants, and game, amounting to approximately 350 species [2].

Material and Method

Research location. The study was realized in Arad County, located in Romania's West Gate and considered one of the country's most important county. Named „Little Wien” by Nicolae Iorga, “a Third Rome” by Romanian historians and “the Hungarian Golgotha”

by Hungarian historians, Arad city is spectacularly displayed with large parks and monumental buildings on Mureş river. The spectacular Traian Bridge from the city's heart was once the border between provinces, countries and empires, the place where the Ottoman Empire united with the Habsburg Empire, where Transylvania united with Hungary and Banat.



Fig. 1 Location of Arad County (source www.pe-harta.ro)

The total surface of the forest fund managed by Arad Forest County through its 10 forest districts amounts to 101.672 ha, representing approximately 13% of the county's surface. From this forest fund's surface, 98.748 ha are forests, while 2924 ha are other fields.

Resinous species (Norway spruce, fir, others) represent 6% of the forest fund's surface, namely 5462 ha. Broad-leaved species (common beech, quercus, some hard, some soft) represent 94% of the forest fund's surface, namely 93.286 ha (www.rosilva.ro).

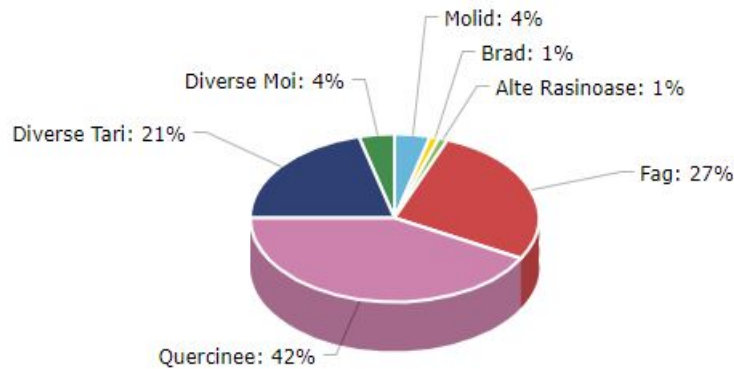


Fig. 2 Total surface of Arad's forest fund

Arad County is comprised of 74 game funds that amount to 743.114 ha occupied by the following game species: bear, wolf, lynx, common deer, fallow deer,

mouflon, buck, boar, rabbit, wildcat, pheasant, badger, fox, marten, ferret, and weasel. Furthermore, the fish fauna is also well represented. From them, eight

species (follow deer, mouflon, bug duck, quail, snow bird, jay, chub and tench) were selected and studied in an analytic hierarchy process (AHP). The analysis was realized with the Expert Choice Desktop software.

AHP is one of the most used decisional support models at a global level for solving complex decision-making problems in various domains, including biological studies [1, 15, 22]. The analytic hierarchy process uses pair comparisons of selected criteria for evaluating the importance of the other ones. As such, the complex problem (meaning the purpose of this research) is structured hierarchically with the objective at the hierarchy's top and the criteria (and eventual sub-

criteria) at the hierarchy's levels. The alternatives (meaning the selected eight non-wood forest products) are at the base of the hierarchy [17].

Results and Discussions

The following species were selected for this study: follow deer (*Damadama* L.), mouflon (*Ovies aries musimon* L.), big duck (*Anas platyrhynchos* L.), quail (*Coturnix coturnix* L.), snow bird (*Turdus pilaris* L.), jay (*Garrulus glandarius* L.), chub (*Squalius cephalus*) and tench (*Tinca tinca*).

Table 1. Alternative AHP ranking

The alternative AHP classification for the 19 criteria taken into account is rendered in Table number 1:

Criteriul		Specii de animale							
		Dama dama	Ovies aries musimon	Anas platyrhynchos	Coturnix coturnix	Turdus pilaris	Garrulus glandarius	Squalius cephalus	Tinca tinca
		1	2	3	4	5	6	7	8
1	Harvesting period	3	4	5	1	2	8	7	6
2	Harvested quantity by one worker in 8 hours	1	2	4	8	7	3	6	5
3	Harvesting cost	8	7	6	5	4	1	2	3
4	Knowledge for harvesting	7	8	5	6	2	1	3	4
5	Tools needed for harvesting	7	5	8	6	2	1	3	4
6	Complexity of harvesting process	7	5	6	8	2	1	3	4
7	Development of the process of harvesting	8	7	5	6	2	1	4	3
8	Knowledge for recognition	1	2	3	6	8	4	5	7
9	Distribution range	4	1	6	7	2	8	5	3
10	Biotic threats	4	3	7	8	6	1	2	5
11	Abiotic threats	3	2	7	8	4	1	6	5
12	Perishability	2	3	5	7	8	1	4	6
13	Market potential	7	8	5	6	3	1	4	2
14	Market demand	8	7	6	5	2	1	4	3
15	Celebrity" of the product on the market	6	5	8	7	2	1	4	3
16	The price of raw product	8	7	6	5	3	1	4	2
17	The price of the derived product	7	8	6	5	2	1	4	3
18	Portfolio of derived products	6	5	8	7	2	1	4	3
19	Transport from the harvesting point to the storage centre	8	6	7	5	2	1	4	3

Based on the AHP's results, the most important game and fish species from Arad County are follow deer and

quail, while the least important ones are tench and jay. (Figure 3).

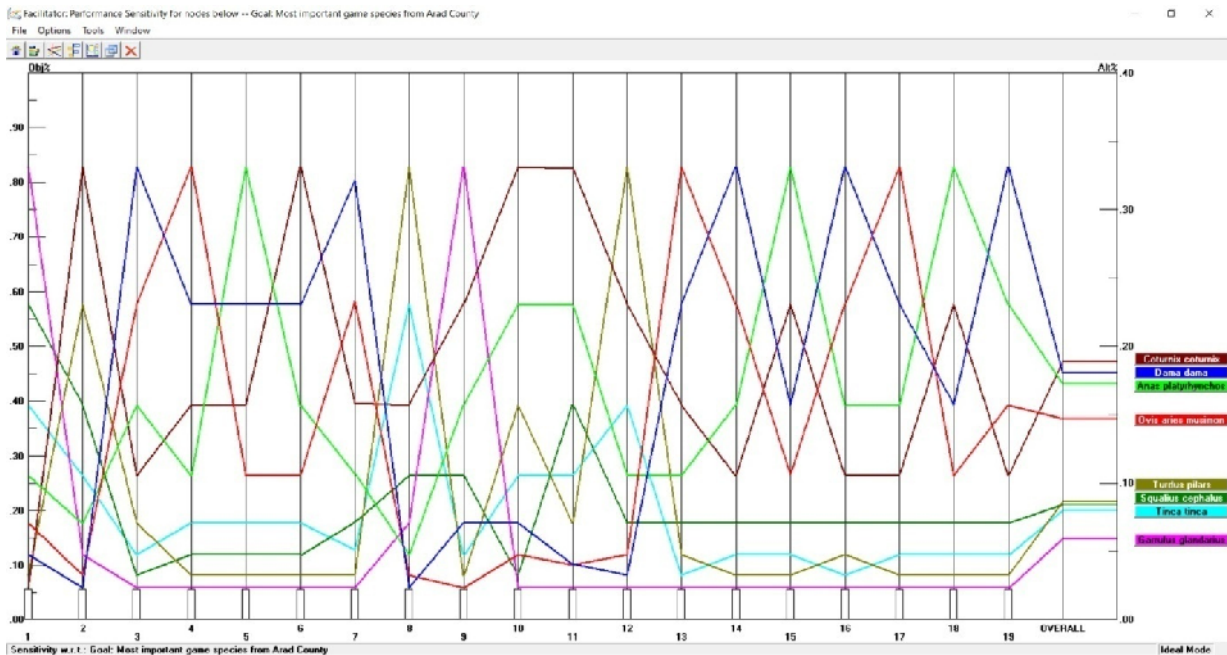


Fig. 3. Ranking of the selected NWFPs

Even though the follow deer does not have a long harvesting period and requires higher harvesting costs and transportation periods, its derived product portfolio is more consistent, followed by a large distribution range and a high market demand.

This is also the largest core and the one with the best genetic aspects from our country. Quail is the second product as importance, being a bird that is highly sought by both Romanian and foreign hunters (especially from Italy, Spain and France). The least important game species that have resulted from the analytic hierarchy process are tench and jay. The tench has a weak presence in Arad's lakes and is not sought

after by anglers, while jay has low grades at all criteria with the exception of its long hunting period and is mainly hunted as a prevention method.

Follow deer is one of the most supplying game species from Arad County (1.070 exemplars in the county harvesting quota from 2019/2020) (Order 673/13.05.2019, appendixes 1-6) and occupies the second place after boar.

Quail also occupies the second place in Arad, after pheasant, in the top of small-feathered game species (7.325 exemplars in the county harvesting quota from 2019/2020) (Order 673/13.05.2019, appendixes 1-6)

Table 2. Harvesting quota for mammals from Arad County in the 2019-2020 season

Species	Common deer	Follow deer	Buck	Boar	Rabbit	Fox	Jackal	Badger	Tree marten	Common ferret	Weasel
Harvesting quota	323	1.070	2.599	4.408	10.002	1.339	320	242	13	161	80

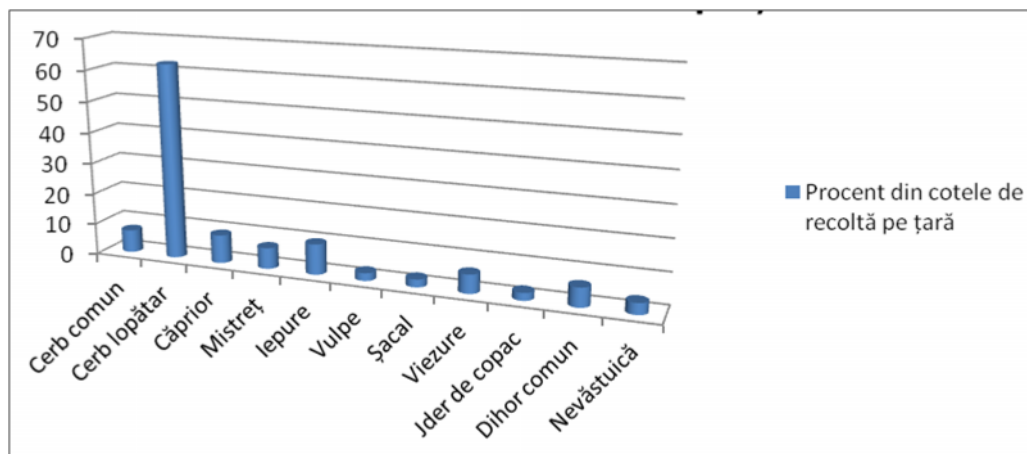


Fig. 4. Percentages of mammals harvesting quota in the 2019-2020 season for Arad County compared with the national harvesting quota

Table 3. Harvesting quota for birds from Arad County during the 2019-2020 season

Species	Summer goose	White-fronted goose	Big duck	Small duck	Coot	Forest woodcock	Hooded crow	Seed crow	Magpie	Jay	Snipe
Harvesting quota	159	148	5.100	1.580	10	215	2.640	790	5.230	525	80

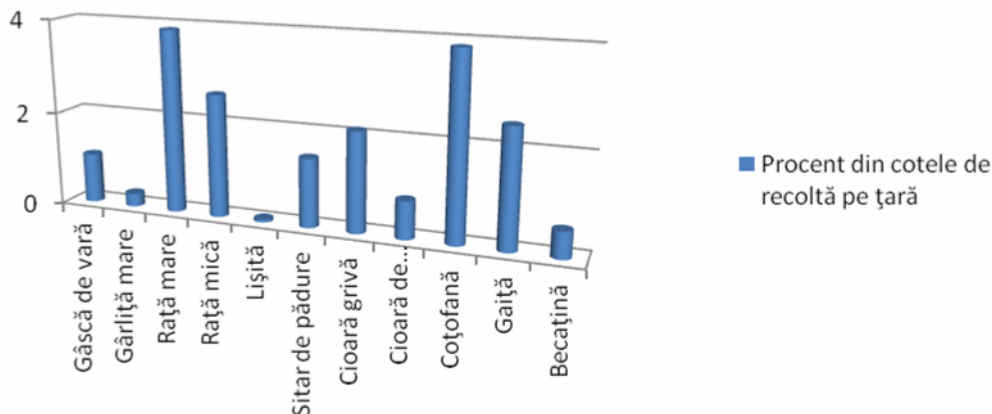


Fig. 5. Percentages of bird harvesting quota for the 2019-2020 season for Arad County compared with national quota

Conclusions

The diversity and potential of harvesting and trading game interest species is higher in Arad County due to the fact that the forest area is more well represented (74 game funds with a total surface of 743.114 ha). As such, game species have the proper space and environment in which to develop while their harvesting and trading represents an important income source for game fund owners.

Follow deer and quail are the most important species from this area, while tench and jay are the least important ones. These results were obtained by analysing 8 species with an analytic hierarchy process. Follow deer and quail are hunted because of their longer harvesting period, larger distribution range, larger portfolio of derived products and a higher market request. On the other side, tench is almost inexistent in the county's lakes and does not have a high market request. Even though it has a longer hunting period, jay has recorded the lowest grades and does not present interest for hunters except as a prevention purpose.

The results of this study have shown that important evaluating, harvesting and marketing contributions can be obtained for the county's game species by evaluating the NFWP's potential.

The Expert Choice Desktop software combined with the analytic hierarchy process proved to be a tool easy to use for solving a complex decision problem. Further studies are recommended for results that are more pertinent and should be complemented by additional criteria and factors.

References

1. Aras H, Erdogmus S, Koc E, 2004. Multi-criteria selection for a wind observation station location using analytic hierarchy process. *Renewable Energy* 29: 1383-1392.
2. Blaga T., Pleșca I.M., Dincă L., 2019. Selecting the most promising non-wood forests products for Bacau County using the analytic hierarchy process. *Studii și Cercetări Științifice-Biologie*, 28(1): 29-33.
3. Bragă C., Dincă L., 2019. Forest is not only wood: Evaluating non-timber products from Dambovită County. *Current Trends in Natural Sciences*, 8(15): 73-78.
4. Ciontu C.I., Dincă L., Bratu I., 2018: Analiza unor specii de interes cinegetic din județul Calarasi. *Revista de Silvicultură și Cinegetică*, 43: 91-95.
5. Ciontu C.I., Dincă L., Enescu C.M., Oneț A., Oneț C., 2018. Analyzing the importance of game species from Argeș County. *Natural Resources and Sustainable Development*, 8(2): 138-147.
6. Cotta V., Bodea M., Micu I., 2001. Vânătorul și vânătoarea în România. Ed Ceres,
7. Crăciunescu, A., Gărgărea, P., 2014. Cinegetică-Salmonicultură – Îndrumar de lucrări practice, București Editura Ceres, pp:17-18.
8. Dincă L., Enescu C.M., Timiș-Gânsac V., 2018. Game species from Tulcea county and their management. *Scientific papers series Management, Economic Engineering in Agriculture and Rural Development*, 18(3): 101-106.
9. Enescu C.M., Dincă L., Cântar I., 2018. Which are the most common non-wood forest products in Timis County? *Research Journal of Agricultural Science*, 50(1): 51-56.

10. Enescu R., Dincă L., 2020. An assessment of forest fruits from Arad County. *Annals of the University of Craiova – Agriculture, Montanology, Cadastre Series*, 49(2), pag.107-112.
11. Legea 407/2006. Legea vânătorii și a protecției fondului cinegetic nr. 407/2006 din 09/11/2006 (actualizată 24/07/2015).
12. Molnár, L. M., 2011. Vânătoare și pescuit în epoca romană. *Analele Universității Creștine „Dimitrie Cantemir”*, București, Seria Istorie –Serie nouă, Anul 2, Nr.1-2, pp: 101-124.
13. Momir B., Petroman I. , Petroman C., Stefanovic M. , Gavruta A. , Firu A. , Marin D., 2015. Management of hunting and hunting fund (a case study). *Lucrări Științifice Management Agricol*, Vol. 17, No. 14, pp: 44-50.
14. OMAP 673/2019. Ordinul ministrului apelor și pădurilor nr. 673/13.05.2019, privind aprobarea cotelor de recoltă pentru unele specii de faună de interes cinegetic, la care vânătoarea este permisă, pentru perioada de vânătoare 15 mai 2019-14 mai 2020 anexele 1-6.
15. Park S, Choi C, Kim B, Kim J, 2013. Landslide susceptibility mapping using frequency ratio, analytic hierarchy process, logistic regression, and artificial neural network methods at the Inje area, Korea. *Environmental Earth Sciences* 68: 1443-1464.
16. Pleșca I.M., Blaga T., Dincă L., Breabăn I.G., 2019: Prioritizing the potential of non-wood forest products from Arad county by using the analytical hierarchy process. *Present Environment and Sustainable Development*, 13(2): 225-233.
17. San Cristóbal JR, 2011. Multi-criteria decision-making in the selection of a renewable energy project in Spain: The Vikor method. *Renewable Energy* 36: 498-502.
18. Timiș-Gânsac V., Dincă L., Enescu C.M., 2018: The most important animal species from Bihor County. *Annals of the University of Oradea, Fascicle: Environmental Protection*, 30: 165-170.
19. Tudor C., Dincă L., 2019: The main categories of non-wood forest products from Vrancea County. *Research Journal of Agricultural Science*, 51(4): 211-217.
20. Vechiu E., Dincă L., Enescu C.M., 2018. Which are the most important forest fruits in Gorj County? *Revista de Silvicultură și Cinegetică*, 23(42): 89-93.
21. Vechiu E., Dincă L., 2019. Forest fruits from Sibiu County. *Research Journal of Agricultural Science*, 51 (3): 163-168.
22. Wang G, Huang SH, Dismukes JP, 2004. Product-driven supply chain selection using integrated multi-criteria decision-making methodology. *International Journal of Production Economics* 91: 1-15.
23. *** <http://rosilva.ro>